



# FITTING INSTRUCTIONS

Part Number: **3722010 Fitting Kit 6172588**  
Description: **Roof rack fitting kits to suit Toyota 4 Runner 06 ON**  
Suits roof rack cages # **3813010(M), 1790 long x 1120 wide Cage (mesh)**  
# **3813013(M), 1790 long x 1250 wide Trade (mesh)**  
# **3813200, 1790 long x 1250 wide Touring**  
# **4913010M, 1790 long x 1120 wide Cage Alum Mesh**

## WARNING

- ◆ This product must be installed exactly as per these instructions using only the hardware supplied.
- ◆ Do not use this product for any vehicle make or model, other than those specified by ARB.
- ◆ Do not remove labels from this product.
- ◆ This product or its fixing must not be modified in any way.
- ◆ The installation of this product may require the use of specialized tools and/or techniques
- ◆ It is recommended that this product is only installed by trained personnel
- ◆ These instructions are correct as at the publication date. ARB Corporation Ltd. cannot be held responsible for the impact of any changes subsequently made by the vehicle manufacturer
- ◆ During installation, it is the duty of the installer to check correct operation/clearances of all components
- ◆ Work safely at all times
- ◆ Unless otherwise instructed, tighten fasteners to specified torque

---

**www.arb.com.au**  
Corporate Head Office

42-44 Garden St  
Kilsyth, Victoria  
AUSTRALIA 3137

Tel: +61 (3) 9761 6622  
Fax: +61 (3) 9761 6807

## FITTING REQUIREMENTS

### Max load SAFETY

Your ARB Roof Rack has a maximum carrying capacity of 100kg. This load should not be exceeded and all loads must be tied down securely. If you have a cage with mesh fitted, secure the load to the main framing of the cage as well as the mesh.

It is important to follow the listed usage instructions;



- a) The vehicle owner's manual should be consulted prior to loading the roof rack as the manufacturer's recommended maximum load for the vehicle's roof may be less than the maximum load specified for the roof rack.
- b) Load must be evenly distributed and adequately secured.
- c) Any weight carried on the roof of the vehicle will adversely affect its handling, particularly in cornering or in a cross-wind; the vehicle should therefore be driven with increased discretion.
- d) Regularly check the tightness of the securing clamps and the security of the load.
- e) Attention is directed to statutory requirements regarding maximum permissible projections from vehicles.

All bolts should be checked prior to touring to ensure the rack is fastened correctly.

### REQUIRED TOOLS FOR FITMENT OF PRODUCT:

12mm socket and ratchet	6mm Allen key (supplied)
Non Acetic Silicone Sealant	Nut plate insertion tool (supplied)

### HAVE AVAILABLE THESE SAFETY ITEMS WHEN FITTING PRODUCT:

Protective eyewear		Hearing protection	
--------------------	---	--------------------	---

**NOTE:** 'WARNING' notes in the fitting procedure relate to OHS situations, where to avoid a potentially hazardous situation it is suggested that protective safety gear be worn or a safe work procedure be employed. If these notes and warnings are not heeded, injury may result.

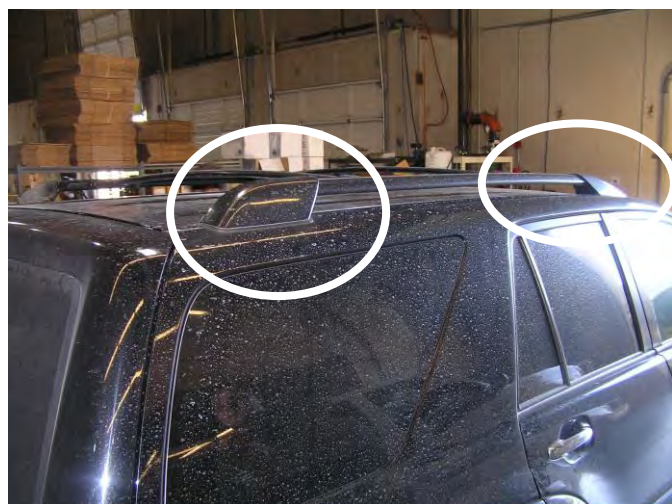
### FASTENER TORQUE SETTINGS:

SIZE	Torque Nm	Torque lbft
M6	9Nm	7lbft
M8	22Nm	16lbft
M10	44Nm	32lbft
M12	77Nm	57lbft

## PARTS LISTING FOR 3722010 (1790 long x 1120 & 1250 wide rack)

APPLICATION.	PART NO.	QTY	DESCRIPTION
<b>ROOF BRACKET TO VEHICLE ROOF</b>	3757854R	1	Roof bracket right hand side
	3757854L	1	Roof bracket left hand side
	5846403	4	Rubber packer roof rack
	6151184	8	Socket head cap screw M8 x 30mm S/S
	4581081	8	Washer flat M8 S/S
<b>ROOF RACK TO ROOF BRACKET</b>	3193522	6	Roof rack bolt plate assembly
	6151184	12	Socket head cap screw M8 x 30mm S/S
	4581081	12	Washer flat M8 S/S
	4581094	12	Washer spring M8 S/S
	6151264	1	Allen key 6mm ball type
	3194158	1	Tool Nut Plate Insertion

### REMOVAL OF ROOF BARS AND PREPARATION



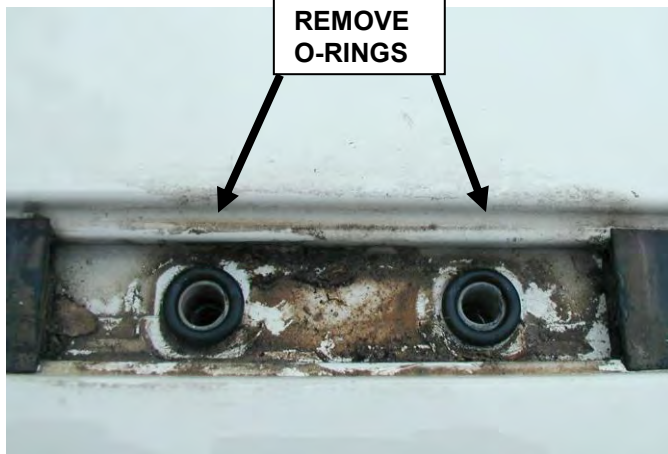
1. Remove the plastic roof bar covers from each end of the roof bars by gently prising off, see below.



2. Remove the factory bolts, metal brackets and bars.

**NOTE:** Keep the bars, factory bolts, brackets and plastic covers in a safe place so that they can be re-fitted if you wish to remove the roof rack at a later date.

## REMOVAL OF ROOF BARS AND PREPARATION



3. If fitted, remove the 'o'rings around the fixing points in the channel.
4. Thoroughly clean the sealing surface in the base of the channel where the supplied rubber seal will sit



5. Remove the cap and rubber grommet from the bolts removed from the roof.
6. For fitment of the mounting brackets to the roof use the M8 x 30mm socket head cap screws, M8 flat washers and the cap and rubber grommet removed from the factory bolts.

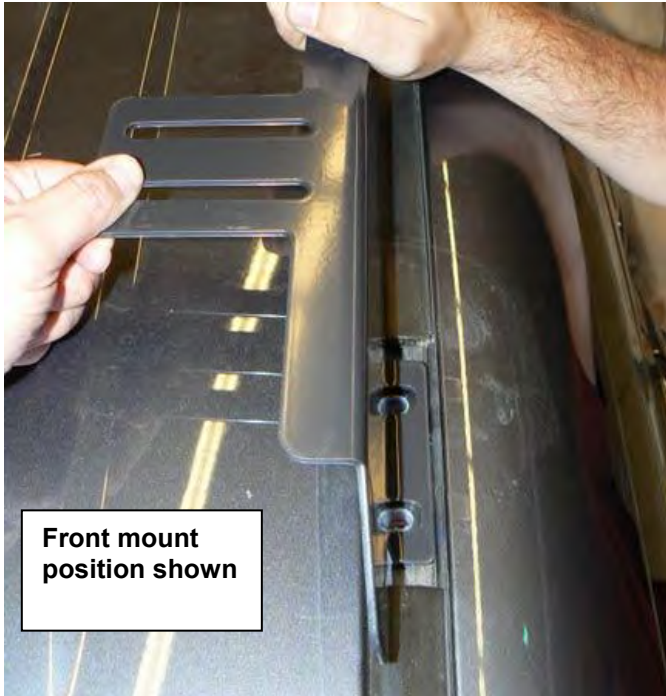
## FITTING PROCEDURE FOR MOUNT RAILS



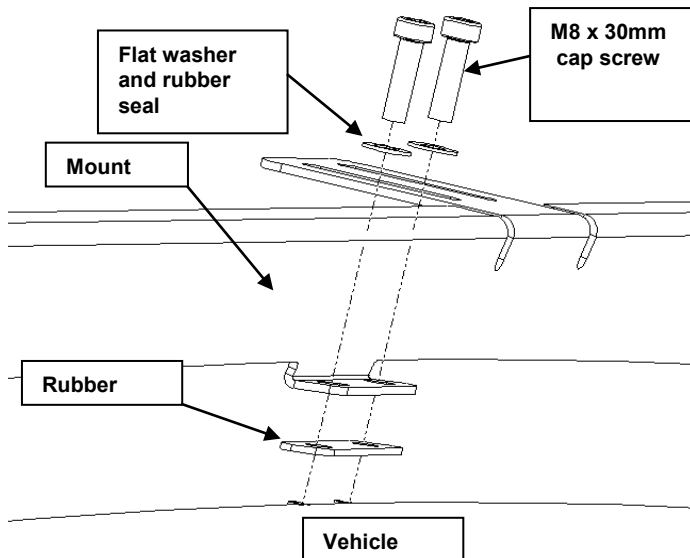
7. Clean the surface first then place supplied rubber seals into the space where the factory brackets were removed from. (see diagram opposite)

***NOTE: A non acetic sealant may be used under the rubber seal. If there are no seals for the heads of capscrews then apply a small amount of sealant to thread of cap screws***

## FITTING PROCEDURE FOR MOUNT RAILS



8. *The rails are handed and must fitted to the correct side of the vehicle. The rear foot which mounts to roof of vehicle faces inboard and has two Allen key access holes in the top fold immediately above the bolt holes.*
9. Place the roof rack mounting rails on the vehicle. *The outboard mount foot is to the front as shown.*

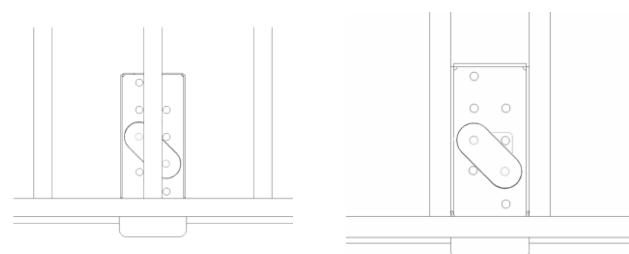
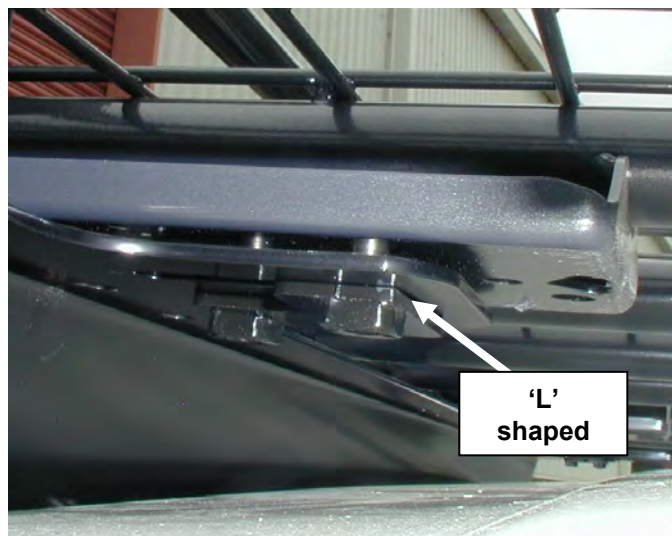


### *Assembly details.*

10. With the two mounting rails in place, tighten all 12 off cap screws using the Allen key provided in the fitting kit to correct torque



## FITTING PROCEDURE FOR ROOF RACKS



Top View Steel

Top View Alurack

11. With the help of three other people, carefully place the roof rack on the mounting rails and line up the holes in the mounting rails with the holes in the roof rack.

12. To aid in the process of fitting the 'L' shaped nut plate an inserting tool is provided in the fitting kit.

13. Bend the handle of the tool so it will allow the nut plate sitting on the tool located as shown to fit through the access point in the roof rack and allow the nut plate to be in the correct position for bolting.

14. **If fitting a steel cage;** fix the roof rack to the mounting rails by first sliding the support plate between the cross bar tube and the bolt bracket, then hold the bolt plate underneath the leg (using the supplied tool if required) and pass the M8 x 30mm SHCS with washers down through the support plate, the cage and the slots in the mounting rails. **Do not tighten cap screws.**

15. **If fitting an Alurack;** first place the support plate on the bolt bracket then fix to the mounting rails as above. **Do not tighten cap screws.**



16. Check that the roof rack is positioned evenly on the roof **and tighten all cap screws to specified torque.**

## FINAL PRODUCT ON VEHICLE

